

# Capacity Development Needs of the Diaspora

Regional Consultation on Migration, Remittances, &  
Development in Latin America & the Caribbean

July 27<sup>th</sup> 2006

Presented by Amy Coughenour





# PADF

PAN AMERICAN DEVELOPMENT FOUNDATION

HAITI

BOLIVIA

Creating Economic Opportunities

Strengthening Communities & Civil Society

COLOMBIA

CSR

Promoting Social Progress

Responding to Natural Disasters

DOMINICAN REPUBLIC

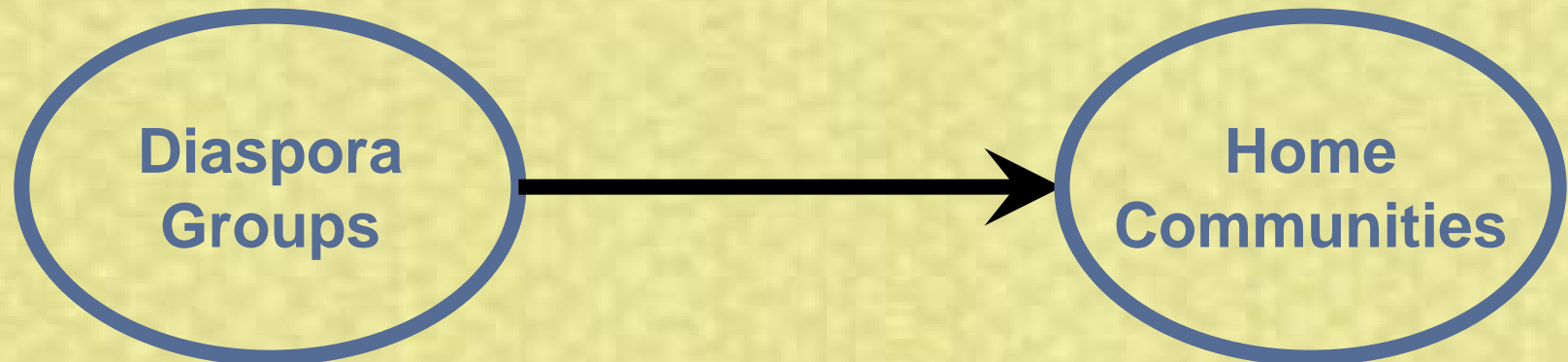
EL SALVADOR

TRANSNATIONAL PROGRAMS

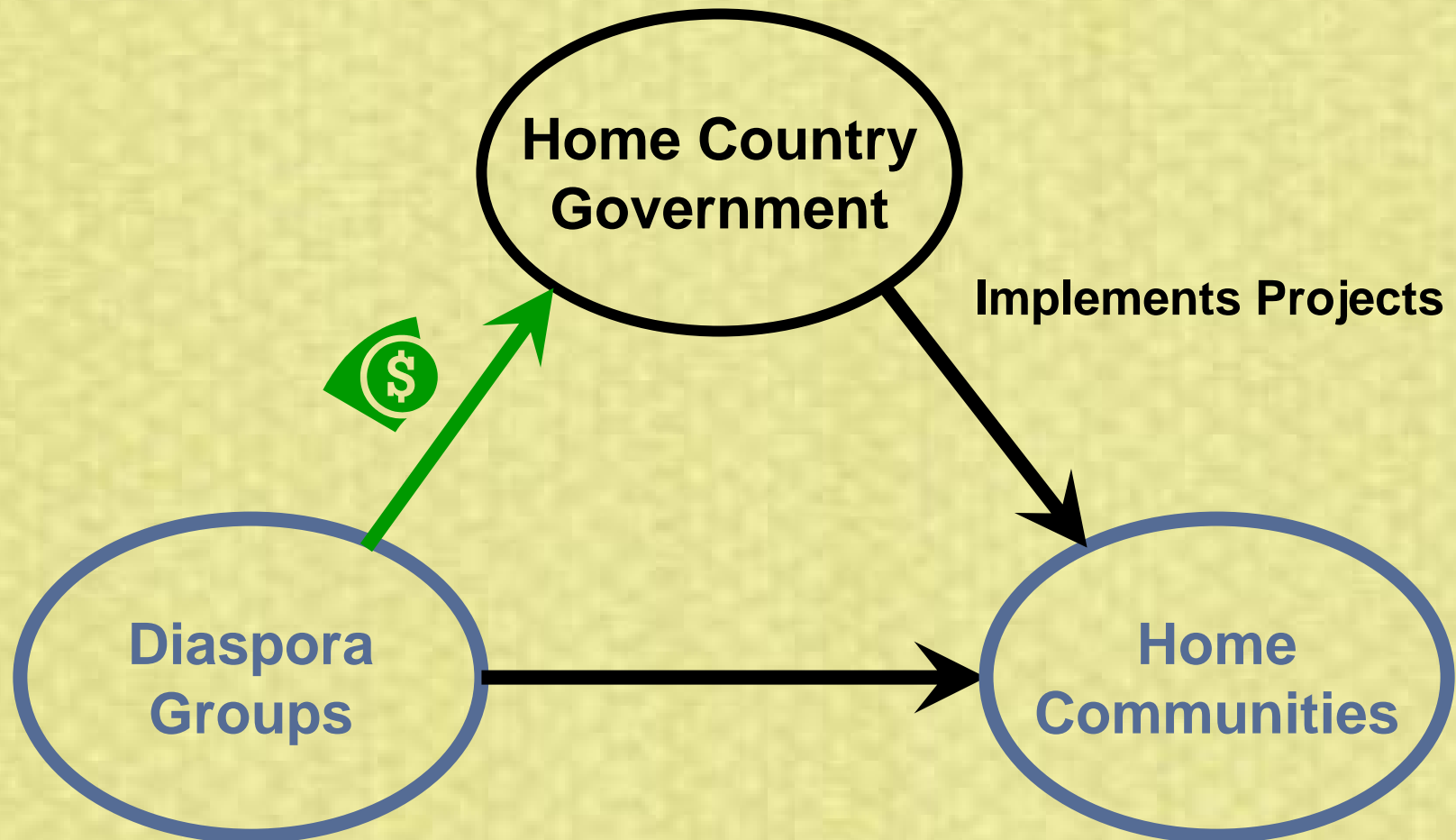
# Model 1. Immigrant-led Philanthropy/Social Investment

---

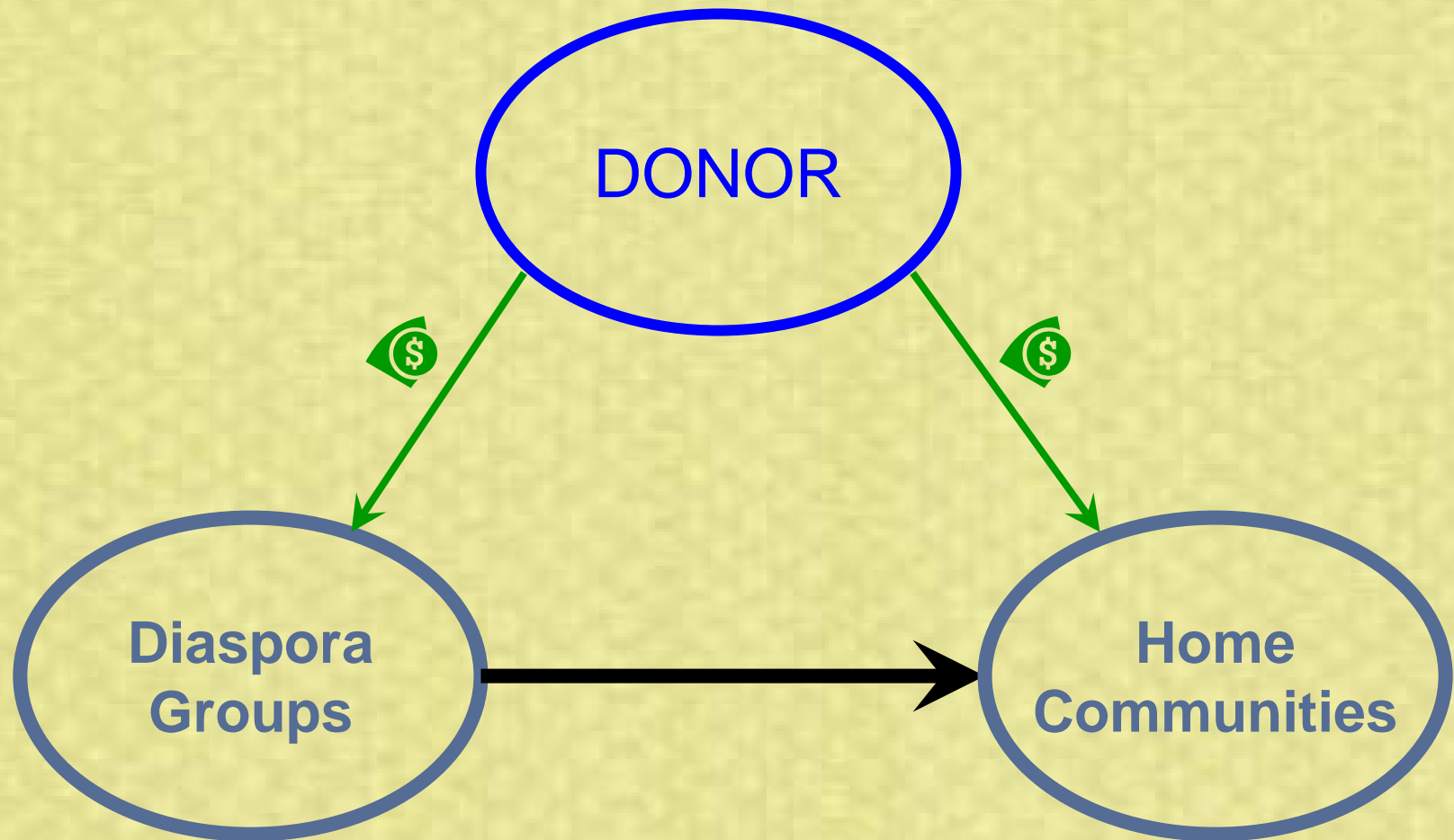
Little or no mediation from outside groups



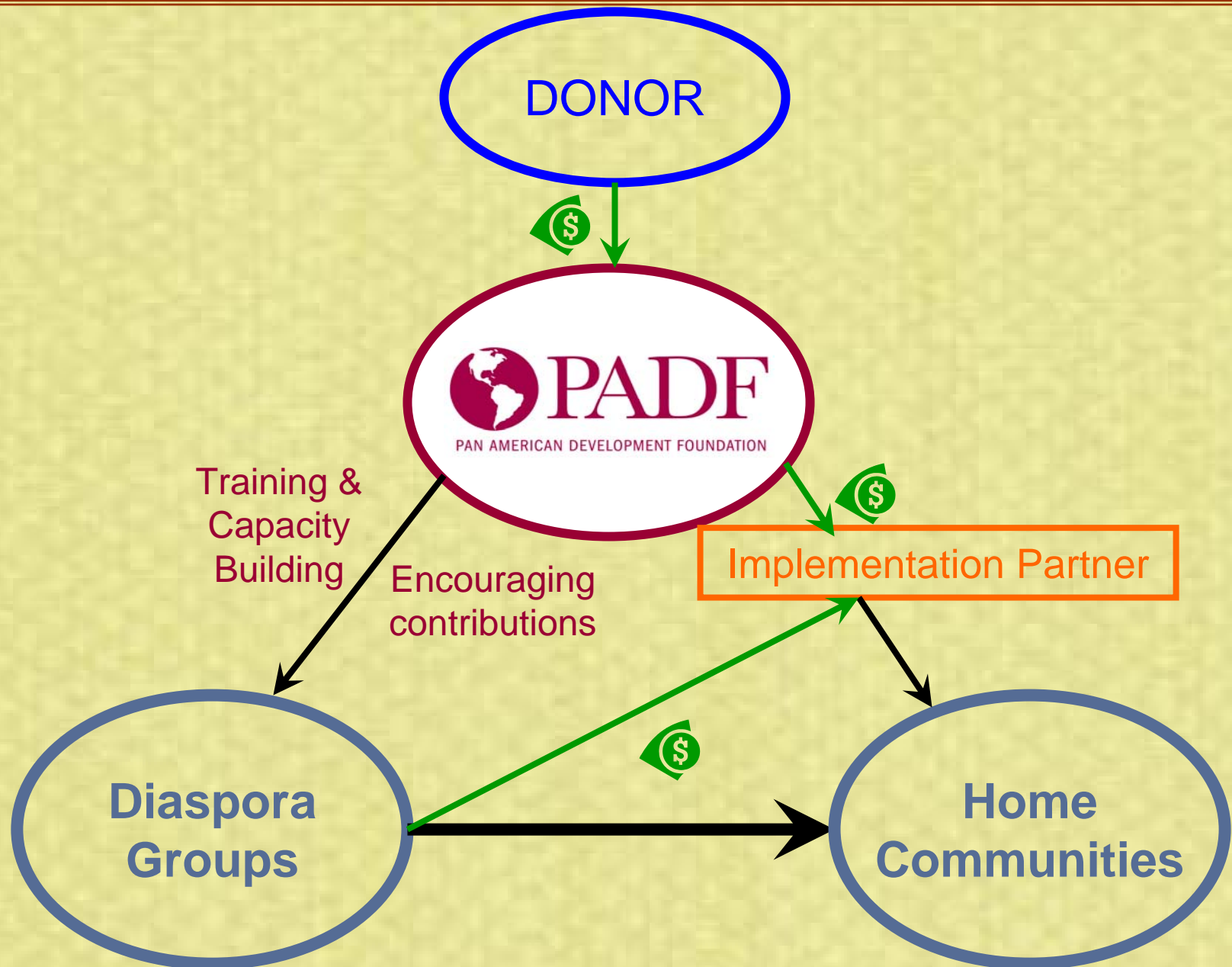
# Model 2. Government-led matching program



# Model 3. Donor-managed small grants

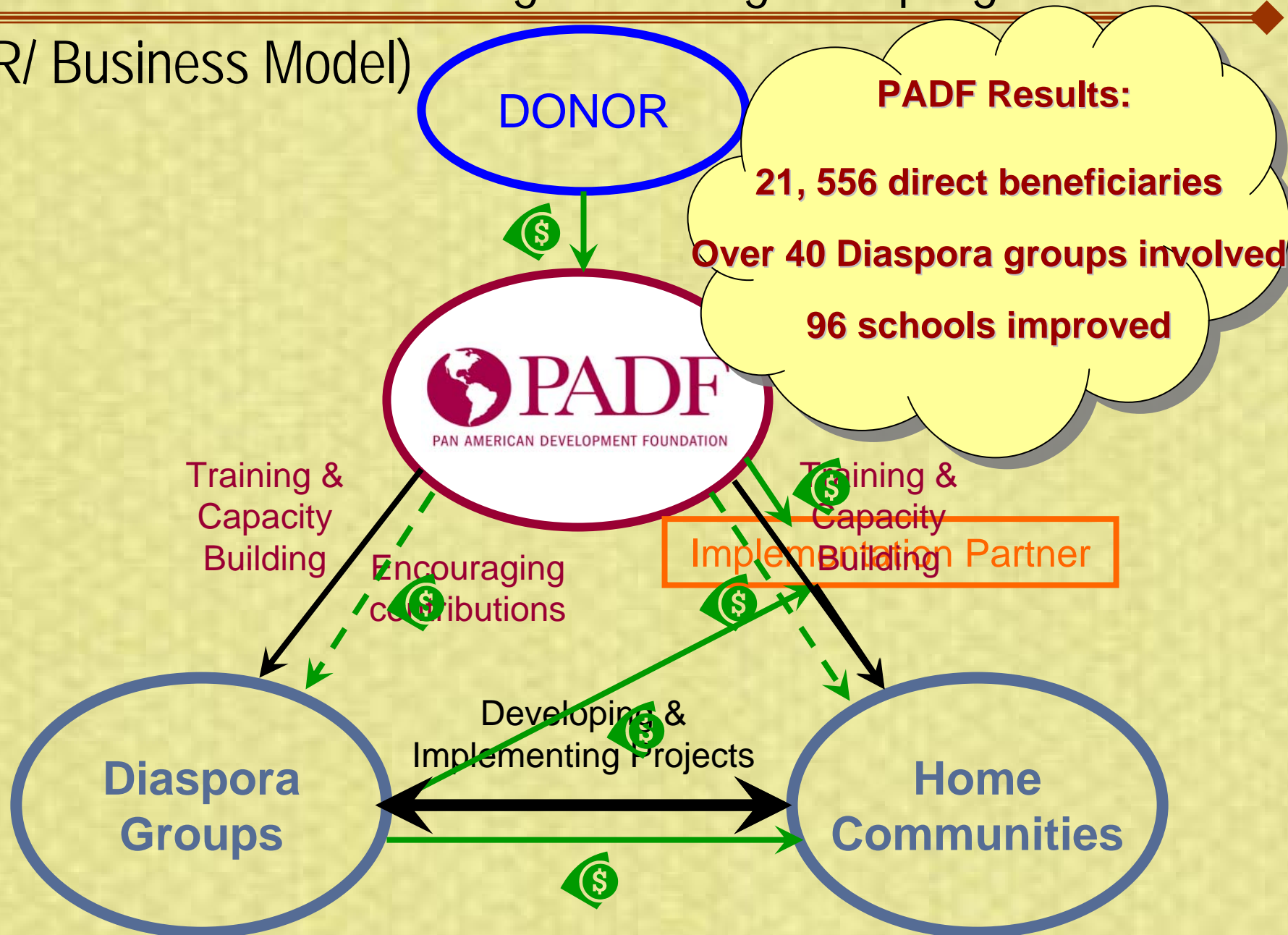


# Model 4. NGO-managed initiative with transnational community

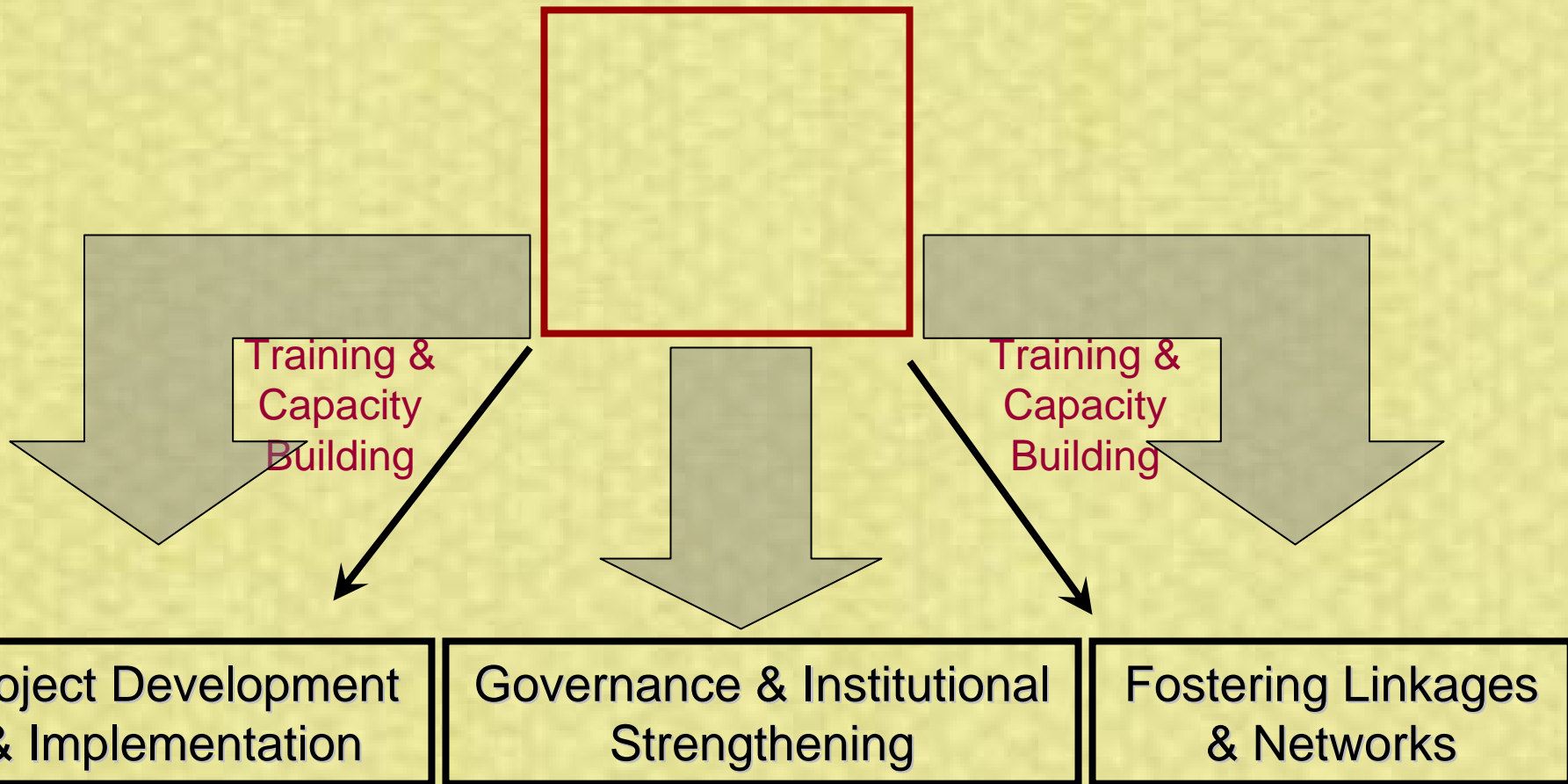


# Model 5. NGO-managed small grants program

(CSR/ Business Model)

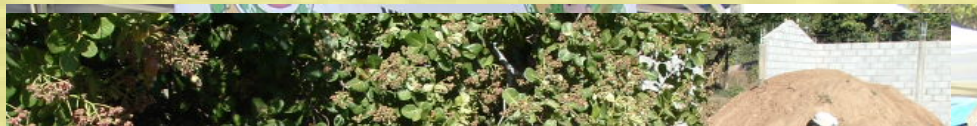


# *Investing in people not just projects*



# Project Development and Implementation

Developing a participatory dialogue with beneficiary community



Choosing priorities & selecting projects



Fundraising

De  
bu

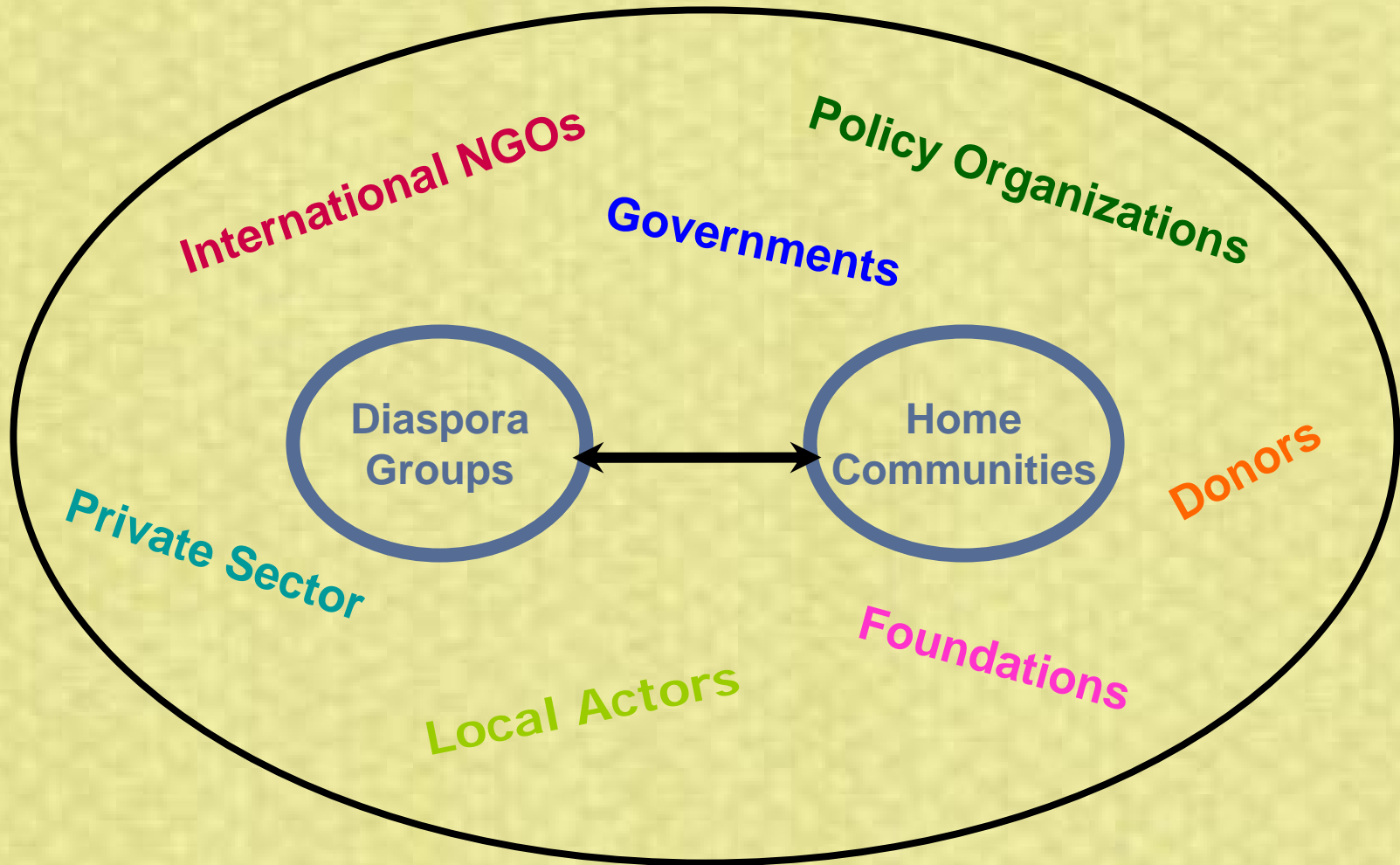
Pr

Pr



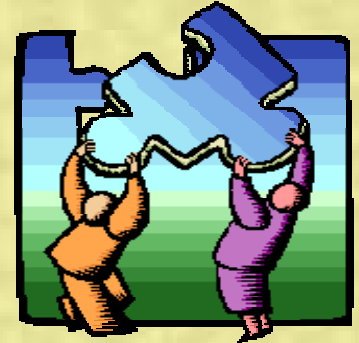


# Fostering Linkages & Networks



# Other Lessons Learned

Importance of involving different stakeholders



Linking capacity building to concrete projects & initiatives

Cost/Benefit analysis for organizations wishing to involve Diaspora groups



## **COSTS:**



- ✓ **Staff-intensive**
- ✓ **Requires trust-building**
- ✓ **“Retail” level of interaction**
- ✓ **Relatively small projects**
- ✓ **Constant communication**

## **BENEFITS:**



- ✓ **Leveraging of social capital**
- ✓ **Increased effectiveness of activities**
- ✓ **Participation in local development processes**
- ✓ **New alliances and resources**
- ✓ **Sustainability**